



Construction Accessories

TIE ROD & FORMWORK ACCESSORIES

— DIN18216 —

ISO 9001:2015 ISO 45001:2018 ECOVADIS EVALUATED
ISO 14064 CALCULATED ISO 14001:2015
CBAM READY

YOUR EUROPEAN STANDARD
PRODUCER

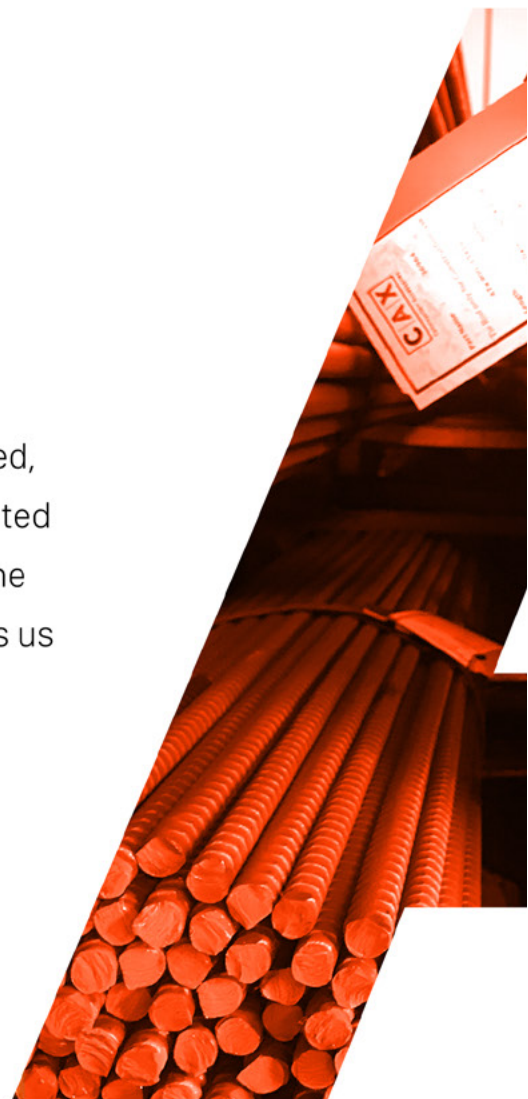
C A T A L O G U E 2 0 2 5





STRONG. RELIABLE. FLEXIBLE.

CAX is your brand of construction accessories that are designed, produced and controlled according to the requirements indicated in DIN 18216: November 2107. The high level of know-how on one hand and the high production capacity on the other hand gives us the possibility to meet the top urgent requirements of construction sector with an exclusive flexibility. We are able to fulfill both the standard demands, as well as the special project-based needs.



CAX BAR TIE ROD

Hot Rolled

Weldable

Ultimate Load 190 [kN]

Working Load 90 [kN]



Weldability Test

ULTIMATE TENSILE STRENGTH
Rm[N/ mm2]

LOSS OF STRENGTH
[%]

Average (Unwelded Cax-Bar)

1.181,72

Average (Welding Process 135)

1.030,44

%12,80

Average (Welding Process 111)

992,49

%16,01

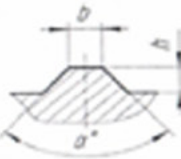
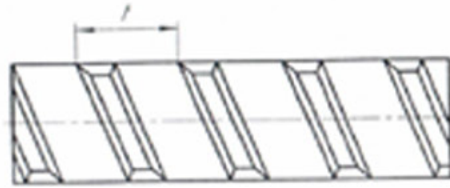
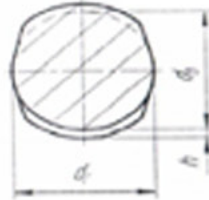
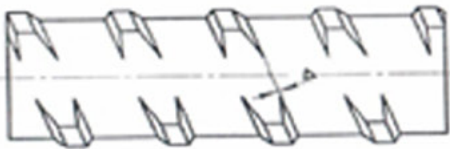


MAX. LOAD Fm[N] Test

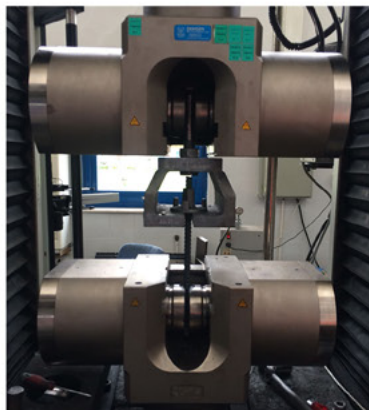
Average (Unwelded Bar)

201.650

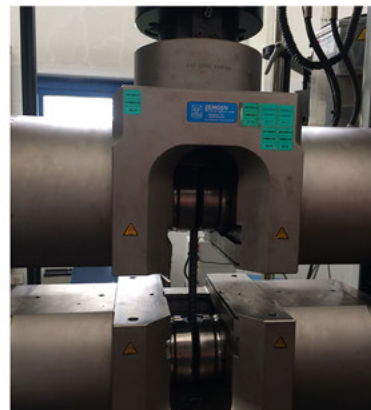
CAX 15/17



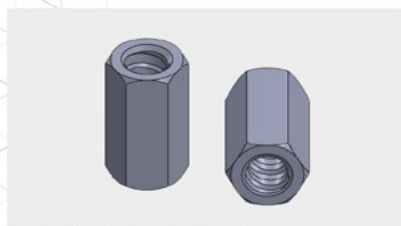
Material	St900/1100
Weight	1,38 Kg/m
db	14,8 mm
dr	14,7 mm
h	1,2 mm
b	2,5 mm
α	90°
t	10 mm



With Nut 202,45 [kN]*



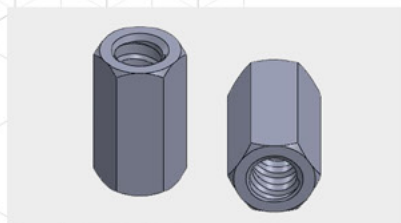
Without Nut 204,92 [kN]*



Hexagonal Nut SW 27

Part Number : **027 -- 15**

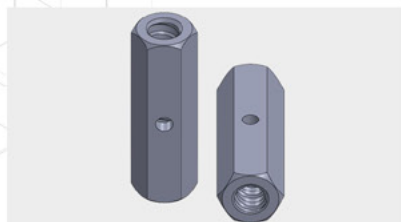
Part Weight	0,100 / 0,180 / 0,252
Length	30 / 50 / 70 mm
SW	27
Material	11SmnPb30



Hexagonal Nut SW 30

Part Number : **027 -- 15**

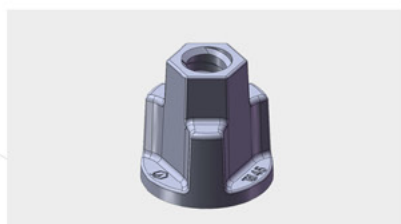
Part Weight	0,130 / 0,210 / 0,300
Length	30 / 50 / 70 mm
SW	30
Material	11SmnPb30



Hexagonal Coupler SW 30

Part Number : **027 -- 15**

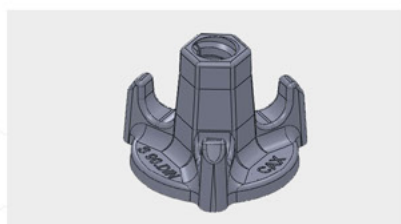
Part Weight	0,430 kg
Length	100 mm
SW	30
Material	11SmnPb30



Wing Nut Ø50mm

Part Number : **050 -- 15**

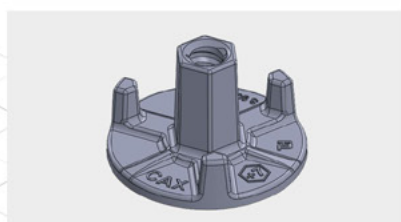
Part Weight	0,300 kg
Material	Ductile Iron
Ultimate Load	195 [kN]
Working Load	90 [kN]



Wing Nut Ø70mm

Part Number : **070 -- 15**

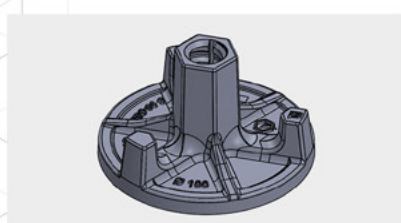
Part Weight	0,445 kg
Material	Ductile Iron
Ultimate Load	195 [kN]
Working Load	90 [kN]



Wing Nut Ø90mm

Part Number : **090 -- 15**

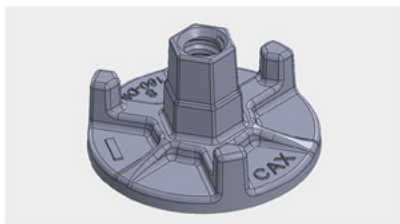
Part Weight	0,510 kg
Material	Ductile Iron
Ultimate Load	195 [kN]
Working Load	90 [kN]



Wing Nut Ø100mm

Part Number : **100 -- 15**

Part Weight	0,685 kg
Material	Ductile Iron
Ultimate Load	195 [kN]
Working Load	90 [kN]



Wing Nut Ø130mm

Part Number : **130 -- 20**

Part Weight	1,550 kg
Material	Ductile Iron
Ultimate Load	345 [kN]
Working Load	160 [kN]



Water Stop

Part Number : **120 -- 15**

Part Weight	0,395 kg
Material	Ductile Iron
Ultimate Load	195 [kN]
Working Load	90 [kN]



Water Stop 15/17

Part Number : **130 -- 15**

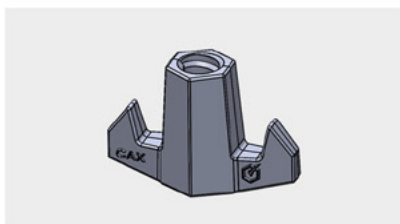
Part Weight	0,550 kg
Material	Ductile Iron
Ultimate Load	195 [kN]
Working Load	90 [kN]



Water Stop 20/22

Part Number : **130 -- 20**

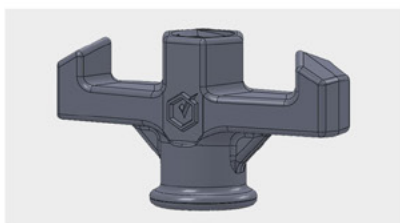
Part Weight	1,210 kg
Material	Ductile Iron
Ultimate Load	345 [kN]
Working Load	160 [kN]



Wing Nut 15/17

Part Number : **110 -- 15**

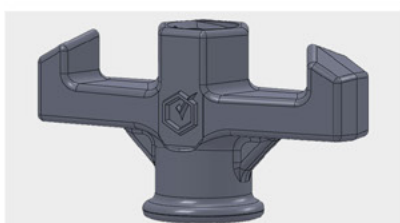
Part Weight	0,350 kg
Material	Ductile Iron
Ultimate Load	195 [kN]
Working Load	90 [kN]



Wing Nut 20/22

Part Number : **110 -- 20**

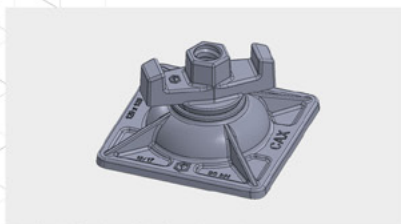
Part Weight	0,480 kg
Material	Ductile Iron
Ultimate Load	345 [kN]
Working Load	160 [kN]



Wing Nut 26,5/30

Part Number : **110 -- 26**

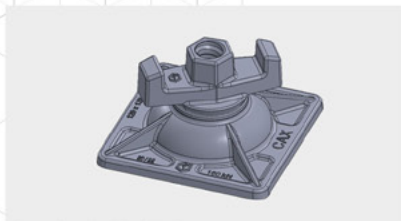
Part Weight	0,905 kg
Material	Ductile Iron
Ultimate Load	580 [kN]
Working Load	280 [kN]



Slope Nut 120 x 120 15/17

Part Number : **120 -- 15**

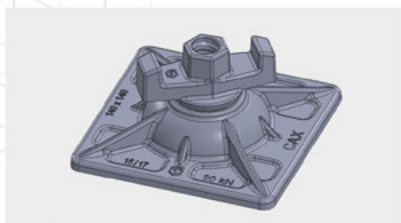
Part Weight	1,160 kg
Material	Ductile Iron + Steel
Ultimate Load	195 [kN]
Working Load	90 [kN]



Slope Nut 120 x 120 20/22

Part Number : **120 -- 20**

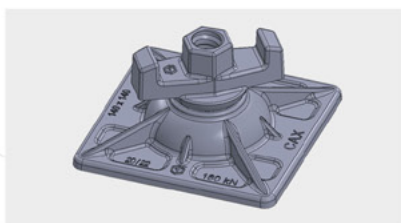
Part Weight	1,300 kg
Material	Ductile Iron + Steel
Ultimate Load	345 [kN]
Working Load	160 [kN]



Slope Nut 140 x 140 15/17

Part Number : **140 -- 15**

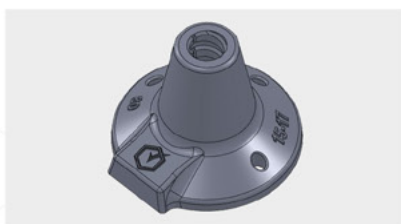
Part Weight	1,600 kg
Material	Ductile Iron + Steel
Ultimate Load	195 [kN]
Working Load	90 [kN]



Slope Nut 140 x 140 20/22

Part Number : **140 -- 20**

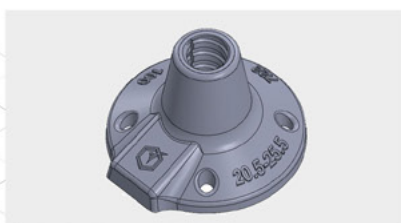
Part Weight	1,770 kg
Material	Ductile Iron + Steel
Ultimate Load	345 [kN]
Working Load	160 [kN]



Anchore Plate Ø80 [15/17]

Part Number : **715 -- 15**

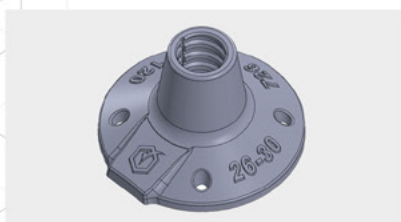
Part Weight	0,615 kg
Material	Ductile Iron
Ultimate Load	195 [kN]
Working Load	90 [kN]



Anchore Plate Ø100 [20/22]

Part Number : **720 -- 20**

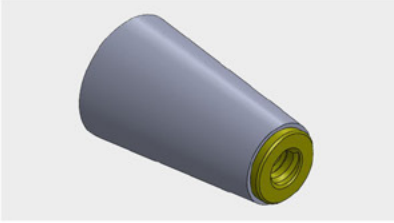
Part Weight	0,880 kg
Material	Ductile Iron
Ultimate Load	345 [kN]
Working Load	160 [kN]



Anchore Plate Ø120 [26,5/30]

Part Number : **726 -- 26**

Part Weight	1,260 kg
Material	Ductile Iron
Ultimate Load	580 [kN]
Working Load	280 [kN]



Steel Plastic Cone

Part Weight	0,390 kg
Material	11SmnPb30 + PP
Ultimate Load	195 [kN]
Working Load	90 [kN]



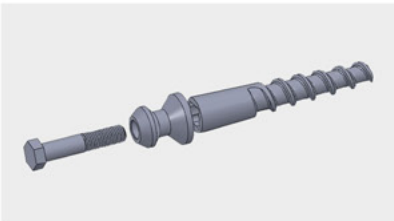
Cone Ø30 15/17 to M24

Part Weight	0,570 kg
Material	11SmnPb30 + PP
Ultimate Load	195 [kN]
Working Load	90 [kN]



Cone Ø30 15/17 to 15/17

Part Weight	0,640 kg
Material	11SmnPb30 + PP
Ultimate Load	195 [kN]
Working Load	90 [kN]



Anchorage

Article No.	Anchor	Ø	Length	Weight
M 20X120	M 20	39 mm	120 mm	0,600 kg
M 20X140	M 20	39 mm	140 mm	0,700 kg
M 20X160	M 24	39 mm	160 mm	0,800 kg
M 20X200	M 20	39 mm	200 mm	1,000 kg
M 20X200	M 24	49 mm	200 mm	1,600 kg
M 20X250	M 24	39 mm	250 mm	0,950 kg
M 20X250	M 24	49 mm	250 mm	1,750 kg
M 20X280	M 24	39 mm	280 mm	1,100 kg
M 20X300	M 24	49 mm	300 mm	1,950 kg
M 20X250	M 30	59 mm	250 mm	2,400 kg
M 20X300	M 30	59 mm	300 mm	3,000 kg
M 20X360	M 30	59 mm	360 mm	3,600 kg
M 20X400	M 30	59 mm	400 mm	3,800 kg
M 20X430	M 30	59 mm	430 mm	4,000 kg
M 20X430	M 36	69 mm	430 mm	5,000 kg
M 20X500	M 36	69 mm	500 mm	6,200 kg
M 20X590	M 36	69 mm	590 mm	7,200 kg



Cone

Size	Ø1/Ø2	Length	SW	Weight
[15/17]	28/32	155 mm	41	0,950 kg
[20/23]	32/35	165 mm	41	1,100 kg
[26/30]	40/45	180 mm	46	1,350 kg

FORMWORK FRAMED PANEL ACCESSORIES

FORMWORK FRAMED PANEL COUPLERS CLAMPS

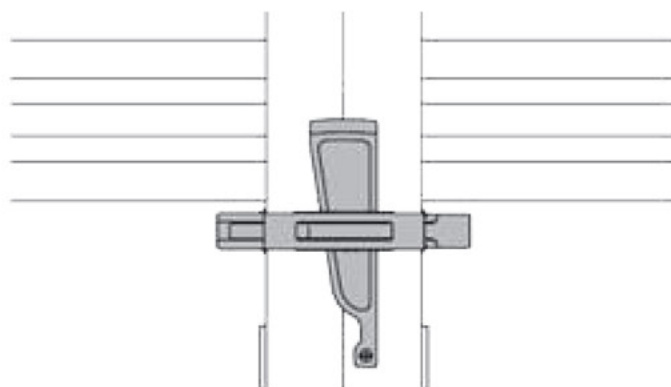
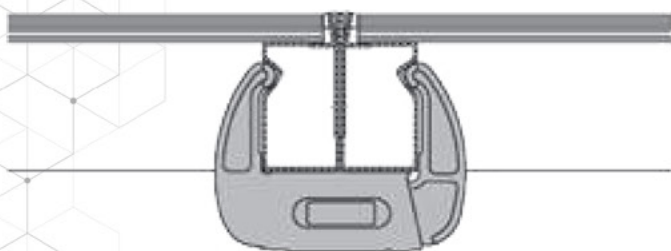
In this segment we are proud to be not only the producer, but also the developer of the parts. Upto this point we already have the experience of designing and development of more than 50 types of Clamps. The designing process starts with the design of Profile and goes into design of accessories, like clamps, nuts, etc.

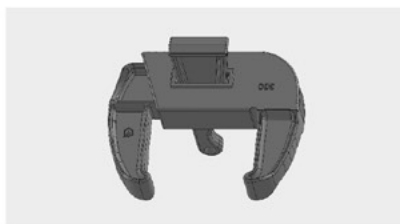
All our clamps are produced with the consideration of the working conditions. For example, all the wedges are produced by forging, to grant the necessary resistance to impact hits. Moreover, our clamps proved themselves in such hard climate conditions as Russia, Poland and Sweden. Most recently, we expanded our product range with 2 new parts.

One of them is MULTI CLAMP. This clamp can fit any separate type of panel, and also can be used for assembling two different types of panels of different formwork producers. This proves to be advantageous for the users at the construction site.

The other newly introduced product is the BFP clamp. The biggest strength of this clamp is the fact that its body is produced from the seamless tube profile. This detail makes this clamp one of the most resistant in the market.

	Clamp Type	Suitable Profile Type	Tensile Force
1-	300CP Clamp PFD Type BFD	[120* 60]	45,3 kN
2-	300 Clamp DB Type	[120* 60]	39,6 kN
3-	300 MU Clamp MU Type	[120* 60]	34,1 kN
4-	340 Clamp DK Type	[95* 20]	31,6 kN
5-	Clamp M Type	[95* 20]	31,3 kN





Clamp DB Type

Part Number : **300**

Part Weight	3,100 kg
Material	Ductile + Forged Wedge
Compatible	Doka Framax

Tested Breaking Load	39,6
Working Load	15,0
Max Shear Load	6,0



Clamp Universal DB Type

Part Number : **300C**

Part Weight	5,600 kg
Material	Ductile + Steel
Compatible	Doka Framax

Tested Breaking Load	-
Working Load	-
Max Shear Load	-



Multifunction Clamp DB Type

Part Number : **300.MDB**

Part Weight	5,800 kg
Material	Forged Steel
Compatible	Doka Framax

Tested Breaking Load	-
Working Load	-
Max Shear Load	-



Clamp DKG Type

Part Number : **340G**

Part Weight	1,350 kg
Material	Male & Wedge Forged
Compatible	Doka Frami

Tested Breaking Load	32,1
Working Load	10,0
Max Shear Load	5,0



Clamp DK Type

Part Number : **340**

Part Weight	1,225 kg
Material	Ductile + Forged Wedge
Compatible	Doka Frami

Tested Breaking Load	31,6
Working Load	10,0
Max Shear Load	5,0

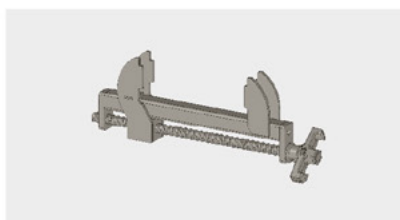


Clamp Universal DK Type

Part Number : **340C**

Part Weight	2.970 kg
Material	Ductile + Steel
Compatible	Doka Frami

Tested Breaking Load	-
Working Load	-
Max Shear Load	-



Adjustanble Clamp DK Type

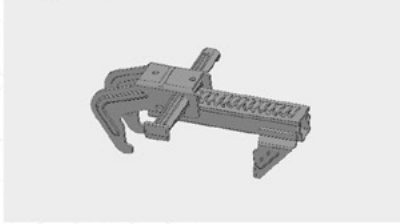
Part Number : **340.CDK**

Part Weight	3,600 kg
Material	Steel
Compatible	Doka Frami

Tested Breaking Load	-
Working Load	-
Max Shear Load	-

FORMWORK FRAMED PANEL ACCESSORIES

FORMWORK FRAMED PANEL COUPLERS CLAMPS

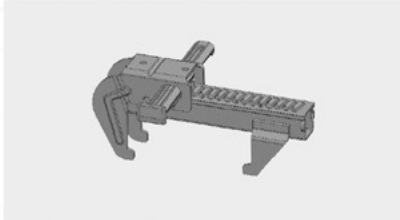


Clamp PFD Type BFD

Part Number : **300CP**

Part Weight	4,395 kg
Material	Steel
Compatible	Peri BFD

Tested Breaking Load	45,30
Working Load	20
Max Shear Load	-



Clamp PRS Type DRS

Part Number : **340CP**

Part Weight	3,130 kg
Material	Steel
Compatible	Peri DRS

Tested Breaking Load	-
Working Load	-
Max Shear Load	-



Clamp M Type

Part Number : **320**

Part Weight	0,875 kg
Material	Ductile + Forged Wedge
Compatible	MVZ, Deko, Meva

Tested Breaking Load	31,3
Working Load	10
Max Shear Load	5



Clamp Universal M Type

Part Number : **320C**

Part Weight	3,000 kg
Material	Ductile, Steel
Compatible	MVZ, Deko, Meva

Tested Breaking Load	-
Working Load	-
Max Shear Load	-



Clamp MU Type Suitable for all types ex. Framax

Part Number : **300MU**

Part Weight	3,160 kg
Material	Ductile + Forged Wedge
Compatible	Doka, Peri, NOE etc.

Tested Breaking Load	34,1
Working Load	15
Max Shear Load	6

All the Connector Bolts are produced by forging and without any machining of the thread. The raw material used for the production is specifically elected to fit the requirements. Moreover, the tooling for the production is designed internally by us. Other than the current range of products we also design the Bolts according to the customer needs.

In the production of the Bolts we avoid the processes that can lower the resistance of the part, like welding or machining of the thread, and we continuously share the importance of this detail with our partners.



Universal Fixing Bolt

Part Number : **115T**

Part Weight (lb)	0,695 kg
Material	Forged Steel
Ultimate Load	120 [kN]
Working Load	60 [kN]



Universal Fixing Bolt

Part Number : **115P**

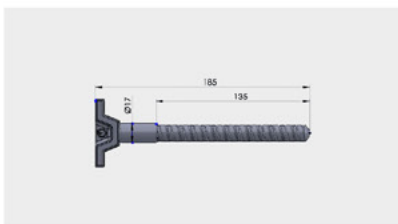
Part Weight (lb)	0,635 kg
Material	Forged Steel
Ultimate Load	120 [kN]
Working Load	60 [kN]



Universal Fixing Bolt

Part Number : **115L**

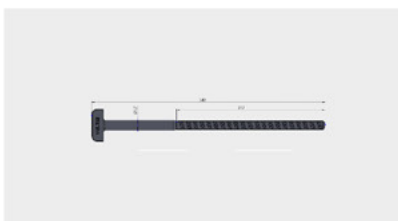
Part Weight (lb)	0,650 kg
Material	Forged Steel
Ultimate Load	120 [kN]
Working Load	60 [kN]



Panel Corner Connector

Part Number : **115V**

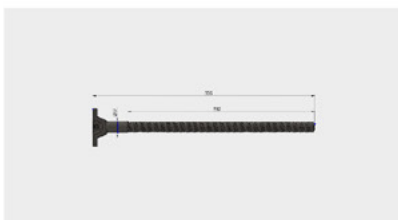
Part Weight (lb)	0,375 kg
Material	Forged Steel
Ultimate Load	120 [kN]
Working Load	60 [kN]



Universal Fixing Bolt

Part Number : **115TU**

Part Weight (lb)	0,695 kg
Material	Forged Steel
Ultimate Load	120 [kN]
Working Load	60 [kN]



Panel Corner Connector

Part Number : **115VL**

Part Weight (lb)	0,610 kg
Material	Forged Steel
Ultimate Load	120 [kN]
Working Load	60 [kN]



Clips H 20

Part Number : **200**

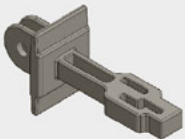
Part Weight (lb)	0,720 kg
Material	Ductile
Compatible	Peri and all other waler systems



Hook Set

Part Number : **220**

Part Weight (lb)	0,805 kg
Material	Malleable
Compatible	Peri and all other waler systems



Support Head [ws 100;120;140]

Part Number : **250**

Part Weight (lb)	2,280 kg
Material	Ductile
Compatible	Peri and all other waler systems



Support Head Pin

Part Number : **254**

Part Weight (lb)	0,330 kg
Material	Forged Steel
Compatible	Doka and all other waler systems



Corner Head

Part Number : **230**

Part Weight (lb)	2,680 kg
Material	Ductile
Compatible	Peri and all other waler systems



Corner Head Universal

Part Number : **240**

Part Weight (lb)	3,300 kg
Material	Ductile
Compatible	Doka and all other waler systems



Wedge 19,5 mm

Part Number : **280**

Part Weight (lb)	0,750 kg
Material	Ductile
Compatible	Peri and all other waler systems



Panel Lock 8 mm

Part Number : **308**

Part Weight (lb)	0,530 kg
Material	Ductile



Panel Lock 10 mm

Part Number : **310**

Part Weight (lb)	0,530 kg
Material	Ductile



Panel Lock 10 mm (Small)

Part Number : **311**

Part Weight (lb)	0,520 kg
Material	Ductile



Formwork Pim

Part Number : **330**

Part Weight (lb)	0,100 kg
Material	Forged Steel



Panel Lock 16 mm

Part Number : **311.ICM**

Part Weight (lb)	0,575 kg
Material	Ductile

SPRING CLAMP



Spring Clamp

Part Number : **410**

Part Weight (lb)	0,440 kg	Base	75 x 110 mm
Material	Sheet Steel	Surface	Painted or Galvanised
Tensile Force	2788 kg		



CAX Rod Clamp

Part Number : **415**

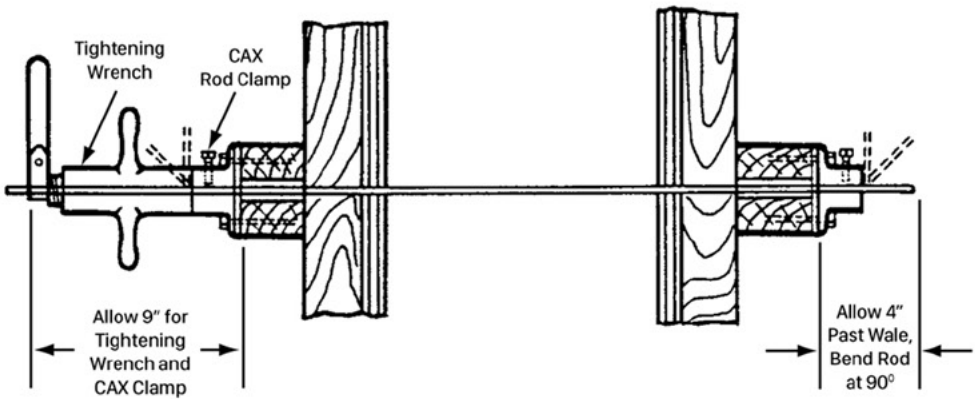
Size	Safe Working Load	Weight (lb)
1/4"	1,125 lbs	1,125
3/8"	2,250 lbs	2,250
1/2"	3,750 lbs	3,750



CAX Rod Tightening Wrench

Part Number : **415W**

Size	Weight (lb)
1/4"	1,125
3/8"	2,250
1/2"	3,750



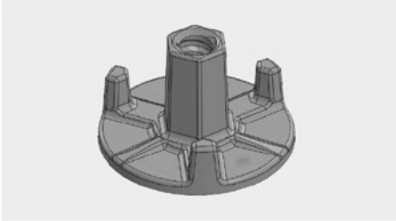


Tie Rod 15/17 (max 6m)

Part Weight (lb) **1.380 kg**

Material **Steel**

Part Number : **115 B**

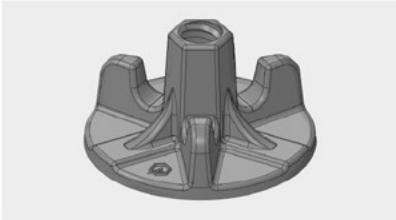


Waler Wing Nut Ø 90 mm

Part Weight (lb) **0.510 kg**

Material **Ductile**

Part Number : **090 B**



Waler Wing Nut Ø 100 mm

Part Weight (lb) **0.685 kg**

Material **Ductile**

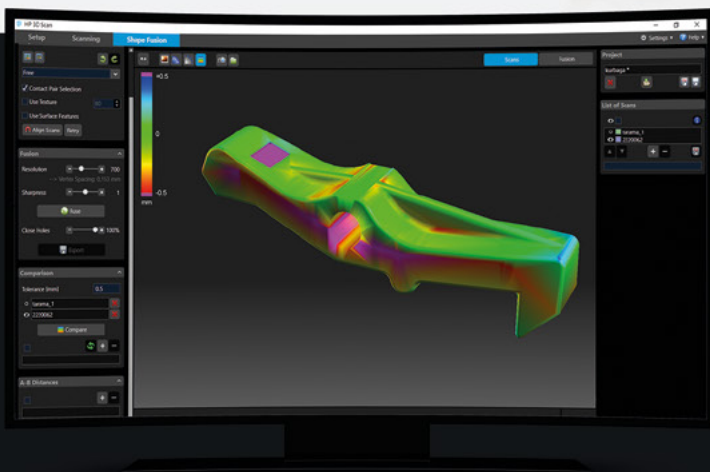
Part Number : **100 B**

Design. Produce. Control.

Your product is designed
using the most innovative
technologies



Quick prototyping
at 3D printers leads to
quick results



3D scan controlling
assures no any detail
is missed



Construction Accessories

Contact us!



Özgür Karakuş

General Manager

Gsm: +90 532 294 7090

karakus@ariltd.com



Evgheni Doncev

Head of Marketing & Purchasing

Gsm: +90 538 771 8044

doncev@ariltd.com



İrma Köroğlu

Head of Marketing & Purchasing

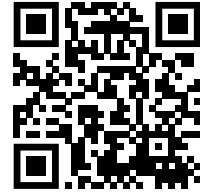
Gsm: +90 536 777 77 02

sales@ariltd.com



Quality and Company Policies

- Mission, Vision & Values
- Our Company's Code of Ethics
- Equality, Diversity, and Inclusion Policy
- Energy Policy
- Information Security Policy
- Hazardous Materials Use and Waste Management Policy
- Employee Health, Safety, and Working Conditions Policy
- Anti-Corruption and Anti-Bribery Policy



Please scan for details.

